



DRY CREEK LANDFILL

HOT ZONE PLAN

JUNE 2023

OVERVIEW

This plan was developed to manage the active areas at Dry Creek Landfill in a safe and orderly manner. Safety is our number one priority in all of our operations.

“Hot Zones” are identified at Dry Creek Landfill as high traffic areas in the active deck, Rogue Compost, and scales. The Hot Zone Plan is a living document and will be adjusted, as needed, to meet the safety needs at Dry Creek Landfill.

As safety is our primary concern in all our operations, it’s essential that we heighten the awareness to our staff, haulers, and third-party vendors by providing the information necessary to follow our safety protocols within the Hot Zone.

The Hot Zone Plan will be followed by everyone who enters Dry Creek Landfill and the Rogue Compost production area.

HOT ZONE DESCRIPTIONS AT DRY CREEK LANDFILL

HWY I40 Scales

Dry Creek Landfill and the Rogue Compost production area are commercial facilities and are not open to the public. The primary scales are located off HWY I40, on a private road, and is used by Knife River, Dry Creek Landfill, and Rogue Compost. Drivers should not exit their vehicles until retrieving their paperwork from inside the ticket booth after weighing out. This area of the site plan and traffic pattern are shown below in Figure I.

Figure I. HWY I40 Scale House



Dry Creek Scales

Back-up scales are located off Dry Creek Road at the secondary entrance to the landfill. Aggregate trucks are not allowed to use this access point, as use is limited to Dry Creek and Rogue Compost commercial customers only (unless otherwise directed). This area of the site plan and traffic pattern are shown below in Figure 2.

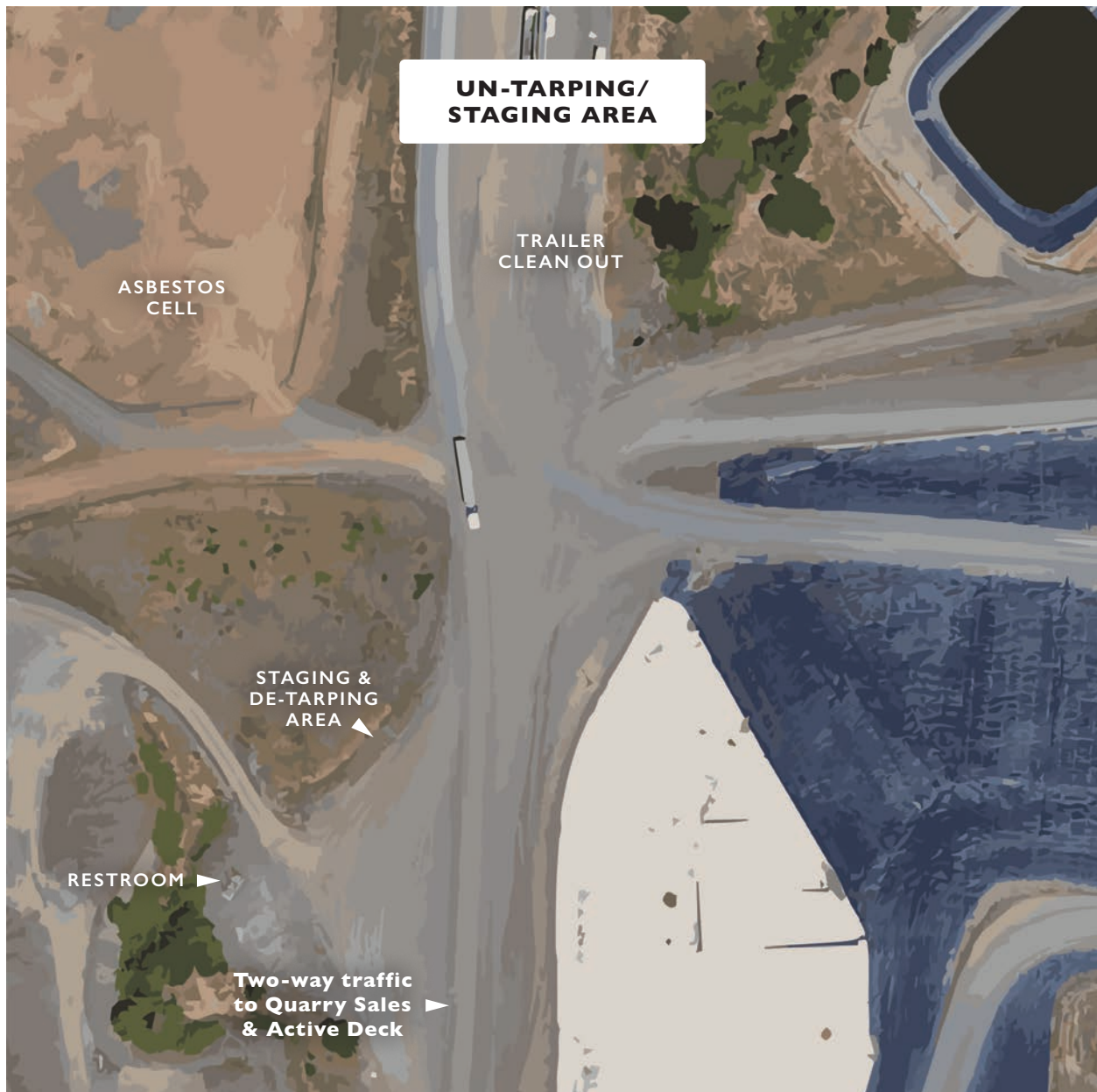
Figure 2. Dry Creek Scale House



Un-Tarpping/Staging Area

Traffic congestion can limit visibility around the Staging Area. While un-tarpping, drivers are required to wear appropriate Personal Protective Equipment (PPE) – referenced on page 9. Site Plan is shown in Figure 3.

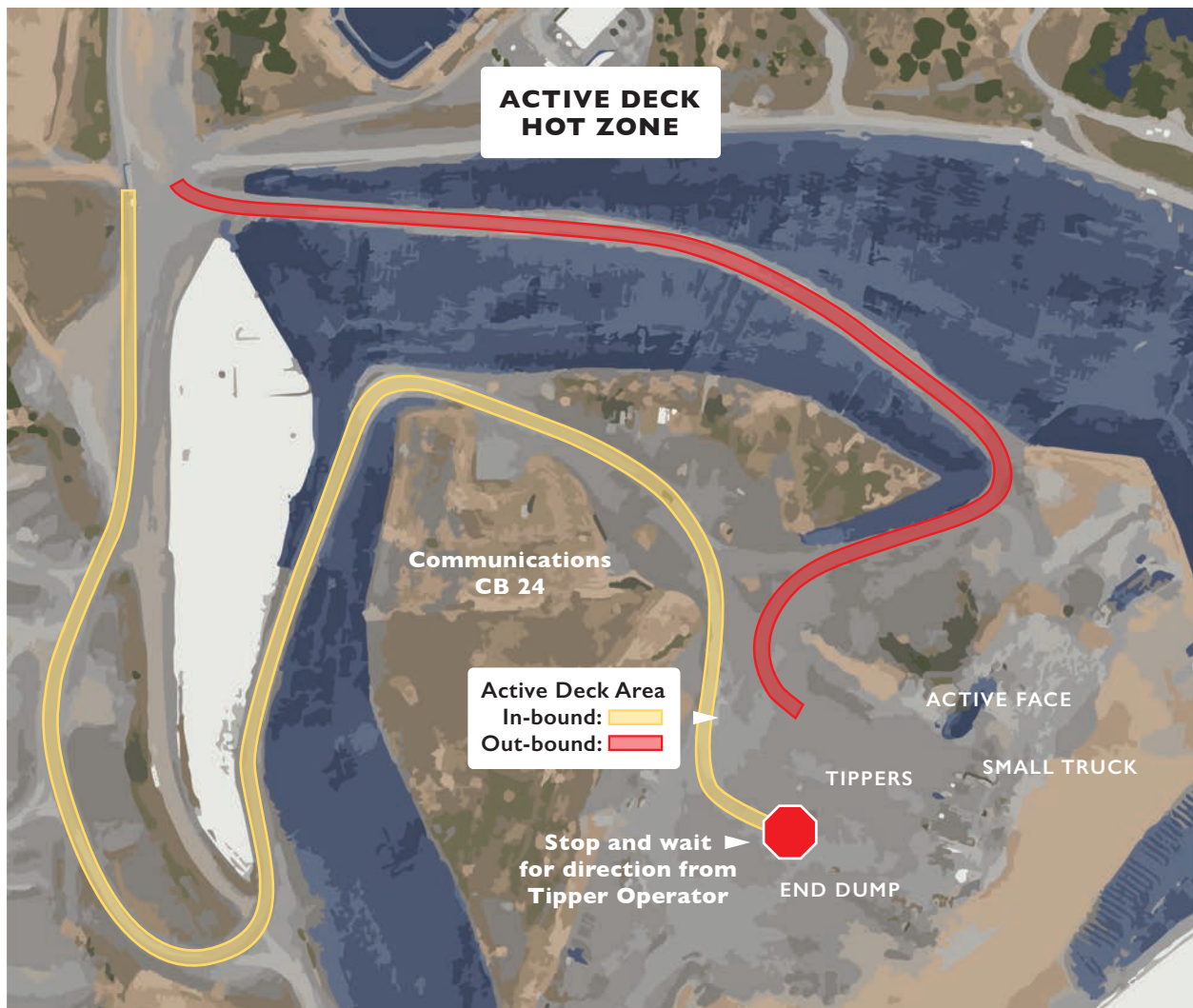
Figure 3. Un-Tarpping/Staging Area



Active Deck

The active deck consists of the areas where trucks are staged to unload/dump their materials. The active deck is continually modified and adjusted to meet operational needs (fill patters, special waste jobs, GCCS construction, etc.). A typical site plan and traffic pattern is shown below in Figure 4.

Figure 4. Dry Creek Landfill Active Deck



Dry Creek Shop

The combination of foot and vehicle traffic around the shop site can potentially cause traffic congestion. Awareness of surroundings is important for continued safety. This area is shown below in Figure 5.

Figure 5. Site Plan Dry Creek Shop



Rogue Compost

Most of the traffic to and from the Rogue Compost production site is controlled by Oak Leaf Transport. In order to increase visibility for traffic entering and exiting the Rogue Compost site, the speed limit is reduced to 20 mph directly before the compost facility.

Figure 6. Site Plan Rogue Compost



ON-SITE COMMUNICATION

CB radios are recommended while on site, as on-site communication is conducted through CB Channel 24.

Rogue Disposal and Recycling does not have CB communication, but utilizes in-house radio communication with Dry Creek personnel.

CB use is limited to operational related communication. We expect everyone to maintain professional conduct at all times. This means, absolutely no swearing, off-color language, or inappropriate jokes are permitted. We are committed to providing a work environment free of offensiveness or harassment. We feel strongly that everyone is treated with dignity and respect and will monitor customers and employees alike.

If a customer does not have a working CB, the scale house attendant will direct them from the scales, via the call box, to the staging area where they will wait for an escort to the active deck.

PERSONAL PROTECTIVE EQUIPMENT (PPE)

Everyone on-site must have proper Personal Protective Equipment (PPE) prior to exiting their vehicles.

- **Body and Foot Protection**

It's recommended that long pants are worn, rather than shorts

Minimum 6" lace-up work boots with puncture resistant sole

- **Hand Protection**

Abrasion resistant leather palm gloves, Nitrile dipped gloves, or Latex rubber gloves

- **High-Visibility Vest**

ANSI Class II traffic safety vest

- **Eye and Face Protection**

ANSI conforming safety glasses, face shield, or safety goggles

- **Head Protection**

Hard hat

High-visibility vests are available for use on-site from the tipper operator, and if needed, additional PPE can be found at the Dry Creek Shop.

HIGH-TRAFFIC AREAS

High-traffic areas include the HWY 140 scale house, back-up scales, staging area, active deck, Rogue Compost production site and Dry Creek Shop. The following rules will be applicable to by all persons on-site.

- **Observe the speed limits posted on-site**
 - Speed limit through the bypass lane at the scales is 20 mph
 - From exiting the scales, the speed limit is 35 mph to the truck wash (apart from the 20 mph outside of the Rogue Compost production site due to rough road conditions)
 - Speed limit is 15 mph on all unpaved roads
- **Follow all posted traffic directions and other posted signs**
- **Safety belts must be worn by driver and all passengers in a moving vehicle**
- **Use of cell phones while operating a vehicle or equipment is prohibited**
- **DO NOT PASS any moving vehicles**
- **Maintain a minimum of 10' spacing between vehicles when parking in high traffic areas**
- **Honk your horn when you are prepared to move – especially when backing up**
- **Maintain awareness of other vehicles (and drivers) when traveling in high traffic areas**

Drivers violating these rules will be given one verbal warning either by radio or in person. If a second violation is observed, the driver will be asked to leave the landfill property for a minimum of 30 days. After 30 days, they or their contracted company, can request that they be allowed to return to the site again.

HOT ZONE

Anyone working at, or visiting the Dry Creek Landfill property, must exercise extreme caution and awareness at all times. Traffic patterns on the deck are determined by the Tipper Operator. If the Tipper Operator is occupied, the Push Dozer Operator will direct traffic until the Tipper Operator is available.

- **Maintain awareness of all personnel within 15 ft. of your vehicle**
- **As a reminder, with equipment operators, if you can't see them, they can't see you**
- **Please follow the directions of Dry Creek Personnel, and if you have any questions, use the CB to contact Tipper Operator**
- **Give the right-of-way to trucks pulling out. Do not back up to the tipper or working face until instructed to do so**
- **While material is being unloaded, all drivers need to remain in their vehicles**
- **Leave a minimum of 10 ft between vehicles when dumping**
- **Know your blind spots and ask for help if you are unsure of clearance**
- **Cell phone use is prohibited while on the active deck**
- **No salvaging or smoking on the property**
- **Do not walk across active deck/Hot Zone unless approved by site personnel**
- **Never stand under a raised tailgate**
- **Never walk or drive behind a backing vehicle**
- **Before departing the active deck, inspect your vehicle, and remove any debris before leaving**
- **Be sure tailgates, hoists, and doors are closed before leaving**
- **Clean out and un-tarp in designated areas**

ALL STOP

When you hear honking and calls across the CB for “ALL STOP” this requires everyone to **ALL STOP IN PLACE** until you are told to proceed over the CB radio.

EMERGENCY PLAN

Depending on the type and location of the emergency, an evacuation notification may be communicated via audible and visual alarm. For detailed evacuation procedures, see the Emergency Action Plan in the Rogue Waste, Inc. Operations Plan.

The general response to an emergency is as follows:

- Assess the situation and its impact upon human health, the environment, and operation of the facility
- Determine the immediate response required, with emphasis on public and operator safety
- Notify the appropriate services (911) and regulatory agencies as soon as possible

SAFETY AND EMERGENCY PHONE NUMBERS

Should there be an emergency situation, such as an evacuation, you will be notified by site personnel for instructions. Please remain at your exact location until you receive instructions from site personnel.

All visitors approved to enter the Hot Zone must be accompanied by site personnel.

To report an emergency or safety concern, please contact:

- **Dry Creek Landfill and Rogue Compost Operations Manager**
Allen Smith
asmith@drycreeklandfill.com
541.301.1873
- **Dry Creek Landfill District Manager**
Jenifer Stuber
jstuber@drycreeklandfill.com
541.841.2087

TOURS

Dry Creek Landfill is a working facility and should be respected as such. Under no circumstances is a visitor allowed to engage in any activity that deviates from the safe environment that we create.

To ensure the safety of visitors to the site, it is required that they follow all instructions, both verbal and written.

- **Tours will be given by qualified Rogue Waste, Inc. employees that are familiar with site safety rules**
- **All visitors must sign-in prior to touring the facility and sign-out at their departure. This process allows us to account for all persons on-site in the event of an emergency.**
- **Visitors must stay with their group, on the tour route, at all times.**
- **Dress for the weather. Avoid clothing that may impede walking and using stairs. Avoid clothing that may become entangled (such as scarves). Wear sturdy walking shoes or boots. Closed toe is required.**
- **Attendees are required to wear high visibility safety vests and protective eyewear. If on the active face, attendees are required to wear a hard hat as well.**
- **Cell phone use is prohibited. Photos may be taken only with prior approval by site management.**
- **There should be one Rogue Waste Employee for every 10 visitors, for those 13 and older**
- **Site management reserves the right to cancel or suspend any tour at any time**